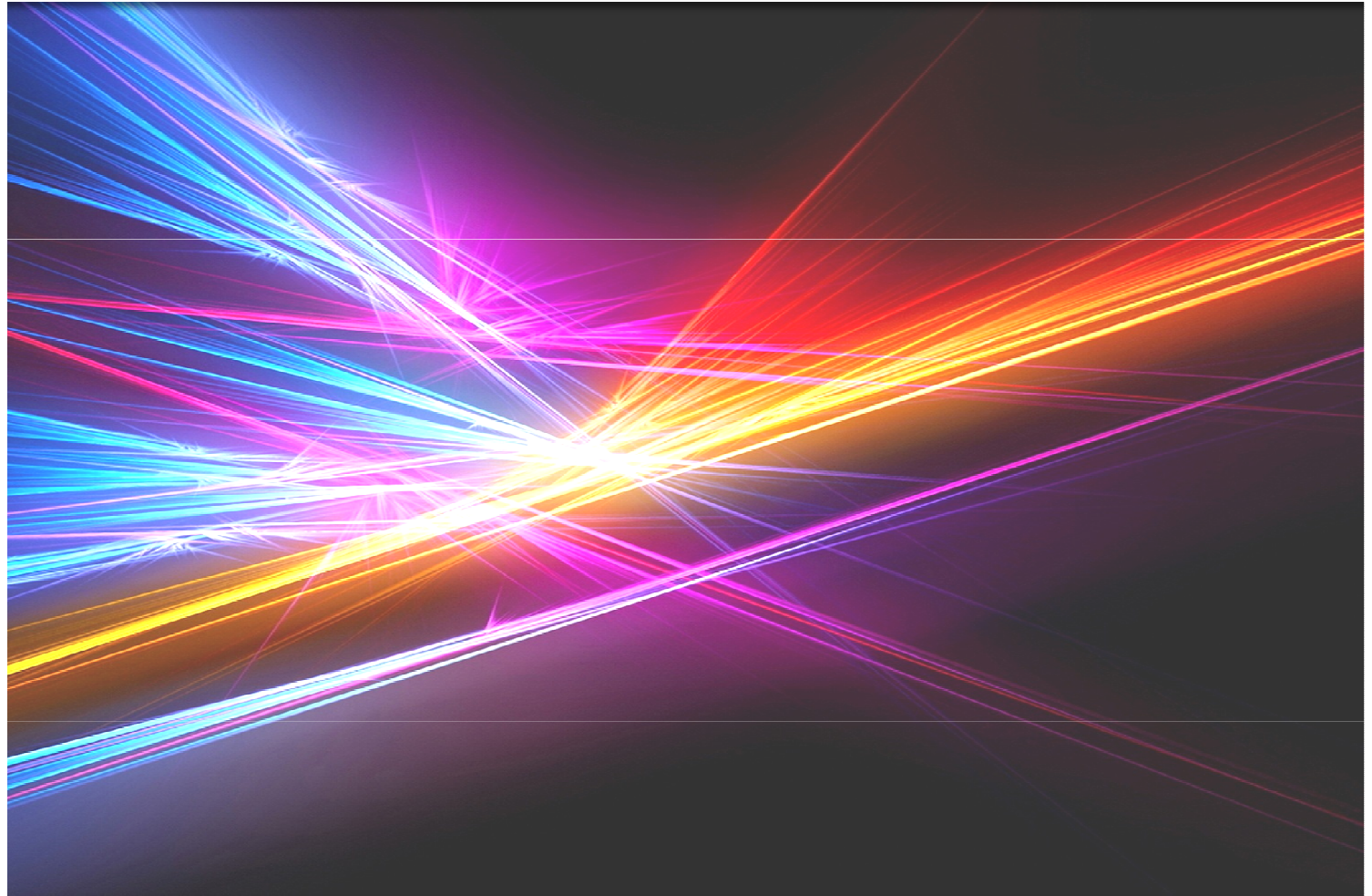


ICONOCLASTES

GALERIE



KOREA
ART
WORK
|



Exposition d'Art Contemporain Coréen

du 21 au 30 Juin 2012

KOREA ARTWORK I

KOREA ARTWORK est un projet qui a pour vocation de réaliser une série d'expositions d'art contemporain coréen pluri-disciplinaires. Chaque domaine d'art apporte un éclairage spécifique avec des formes, matières et médias vairés, mais il s'inspire et s'enrichit également des sources esthétiques des autres domaines artistiques et culturels, proches et lointains, et de leurs apports.

Dans ce projet, nous tentons de réaliser 'marquage et abolition des frontières' entre différents domaines artistiques, en fusionnant à chaque exposition, la peinture, domaine fondamental de l'Art, et un ou deux autres domaines artistiques, comme par exemple 'la peinture + la photographie' ou 'la peinture + le design et l'art d'installation'.

La première série d'exposition de ce projet, intitulée **KOREA ARTWORK I**, est conçue dans la combinaison de deux domaines artistiques - la peinture et le graphisme -, et réalisée grâce à la contribution des 7 artistes qui travaillent, chacun et chaune, à l'aide des outils de création différents. Et elle a pour thème 'Ligne et Lumière' : ligne, l'élément essentiel de toutes activités de production artistique ; lumière, la visée qu'un artiste souhaiterait transmettre à son public à travers ses oeuvres et le résultat de ses créations esthétiques elles-mêmes.

Nous espérons que cette première série d'exposition constituera un début de rencontre interdisciplinaire d'art contemporain coréen, riche et original et, que **KOREA ARTWORK** pourra se développer en un projet culturel intéressant qui intègre de plus en plus de nombreux domaines d'art et de culture.

KOREA ARTWORK I

KOREA ARTWORK는 서로 다른 여러 예술 분야를 접목시켜 시리즈 형식으로 운영될 한국현대미술 전시회 프로젝트입니다. 각 예술 분야는 다양한 형태, 재료 그리고 도구를 사용하여 나름의 고유한 빛을 발산하면서도, 그와 근접한 혹은 거리가 먼 다른 예술-문화 분야에서 이룩된 성과들로부터 미적인 근원을 찾고 영감을 받아 보다 풍요로운 결실을 맺기도 합니다.

이 프로젝트는 매회마다 예술의 기본 분야인 회화와 다른 1~2 예술 분야, 예를 들면 '회화 + 사진' 또는 '회화 + 디자인, 설치예술'을 교차시킴으로써, 예술 분야 간의 '경계 짓기'와 '경계 허물기'를 시도하려는 취지에서 기획되었습니다.

그 첫 회인 **KOREA ARTWORK I**은 두 가지 예술 분야, '회화'와 '그래픽 디자인' 분야에서 다양한 창작도구를 사용하여 활발하게 작품활동을 펼치고 있는 7명의 작가들의 참여로 이루어졌습니다. 전시회의 주제는 '선과 빛'으로, 모든 예술작업의 기본 요소인 '선', 그리고 예술가가 자신의 작품을 통해 보는 이들에게 전하고자 하는 궁극적인 목표이자 예술작품이 그 자체로서 발산하는 결과인 '빛'이 전시작품들을 통해 잘 드러날 수 있도록 구성하였습니다.

이 첫 번째 전시회 시리즈가 다채로우면서도 개성 넘치는 한국현대미술의 다양한 분야간의 만남의 시작을 이루고, 앞으로 **KOREA ARTWORK**가 지속적으로 보다 많은 예술-문화 분야들을 포함시켜 흥미로운 문화 프로젝트로 발전될 수 있기를 바랍니다.



Hyun-Joo KIM

김현주

Formations	Ewha Womans University (A.B.D. - Fashion Design), Seoul, Korea Ewha Womans University (M.A. - Fashion Design), Seoul, Korea Ewha Womans University (B.A. - Fashion Design), Seoul, Korea	
Pratiques	2011 ~	Full-Time Lecturer, Indusry Academic Cooperation Foundation, Fashion Merchandise design, College of Arts, Dankook University, Seoul, Korea
	2010 ~	Art Director, Kaiserin Design Group, Seoul, Korea
Prix	2011	Winner for the Korea Design Exhibition (Visual Art), Seoul, Korea
	2010	Best Awarded for the KAA : Korean Artist's Association (Digital Illustration), Seoul, Korea
Expositions	2010	ATMOSPHERE , Paris, FRANCE
	2010	The Train New York , New York, USA
	2010	Selected for Korea's Next Generation design leader 2010 , Seoul, Korea
	2009	PRESENT , Gallery Miel, Seoul, Korea
	2009	Selected for Korea's Next Generation design leader 2009 , Seoul, Korea
	2009	Milano Pret-a-Porter 2008 - Selected as a top exhibitor, Milano, Italy
	2009	Pret-a-Porter Paris 2010 , Paris, France
	2008	Pret-a-Porter Paris 2009 , Paris, France
	2008	Asia Collection , Osaka, Japan



To Flowers From Korea in Summer
2008/65*82



To Flowers From Korea in Spring
2008/65*82



I hide myself within my flower
2008/65*82



Ji-Yeon KIM

김지연

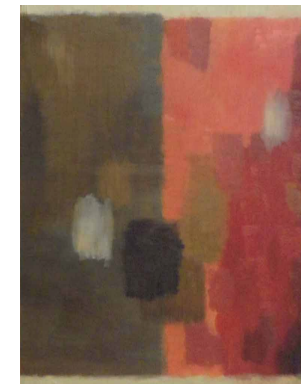
Formations	Sungkyunkwan University (B.A. - Art Education), Seoul, Korea	
Expositions	2012	<i>Matin, Midi, Soir, Nuit et... Au pays du Matin Calme</i> , Galerie Etienne de Causans, Paris, France
	2012	<i>La Corée, au dedans et au dehors</i> , Galerie Metanoïa, Paris, France
	2012	Solo Exhibition, [<i>Ji-yeon KIM</i>], The K Gallery, Seoul, Korea
	2012	<i>Art New York-Korea Art Festival</i> , Hutchins Gallery, Long Island, New York, USA
	2011	<i>Grow out</i> , The K Gallery, Seoul, Korea
	2011	<i>Summer Art Festival</i> , The K Gallery, Seoul, Korea



The Door of Time
2012/41*53



Noble Eightfold Path - Right Vews
2012/24.5*24.5



Noble Eightfold Path - Right Mindfulness
2012/24.5*24.5



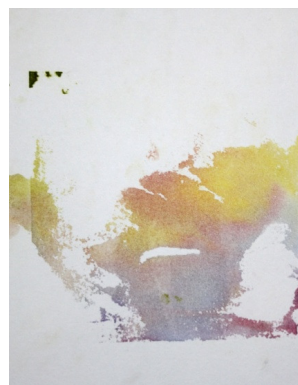
Min-Kyung KIM

김민경

Formations	Kangwon Art High School, Korea	
Prix	2012	Awarded for Cheongwon Art Exhibition, Cheongwon Art Museum, Seoul, Korea
Editions	2012	Artwork pictured in the magazine [Art & design], Seoul, Korea
Expositions	2012	<i>Matin, Midi, Soir, Nuit et... Au pays du Matin Calme</i> , Galerie Etienne de Causans, Paris, France
	2012	<i>Awarded Art Exhibition</i> , Cheongwon Art Museum, Seoul, Korea
	2012	<i>Spring on the tip of your fingers</i> , Gallery Gleeman, Seoul, Korea
	2012	<i>Love for Korean Art</i> , SONG's Gallery, Seoul, Korea
	2012	<i>High Point</i> , Gallery Gleeman, Seoul, Korea
	2012	<i>My heart My art</i> , Gallery Gleeman, Seoul, Korea
	2012	<i>New York EV Project Part 4</i> . The Mimesis of nature, New York, USA
	2011	<i>2011 Awake preparatory artist</i> , Seoul, Korea



NOISE I
2012/21*25



NOISE II
2012/21*25



NOISE III
2012/21*25



NOISE IV
2012/21*25



Su-Mi LEE 이수미

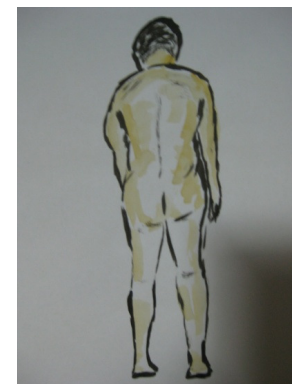
Formations	Université Paris I – Panthéon Sorbonne (Master - Arts Plastiques), Paris, France Université Paris I – Panthéon Sorbonne (Licence - Arts Plastiques), Paris, France Graduate School of International Service of Sookmyung Women's University, Seoul Korea
Expositions	2012 <i>Groupe Exhibition</i> , Seoul Arts center, Seoul, Korea. 2012 <i>Oversea's Exchange of Exhibition</i> , England, Austria, Czechoslovakia and Hungary. 2012 <i>Matin, Midi, Soir, Nuit et... Au pays du Matin Calme</i> , Galerie Etienne de Causans, Paris, France 2012 Solo exhibition, [<i>Su-Mi LEE</i>], Galerie Metanoïa, Paris, France. 2012 <i>La Corée, tradition et modernité</i> , Galerie Metanoïa, Paris, France



Madame Marisot par Sumi LEE
2010/63*47



Homme I
2010/24.5*32.5



Homme II
2010/24.5*32.5



Jae-Hee JANG

장재희

Profil

Drawings, in which Lights are embraced .

The inspirations derived from the meditation over the 10 years, Rodda Jang has created these sacred geometry drawings, in which basically the energies of light and love from the universe have been pervaded.

Rodda Jang had simply be the God's agent to convey His light and love to the human beings on earth by means of drawing.

The drawings are composed of individual images which are emerged by the energies of pattern and color through the process of spiritual focus work.

For those who appreciate the drawings, wish for their soul's growth following to the lights of these drawings, and finding yourself in the journey toward the God Creator.



For the universal father in paradise
2012/80*80



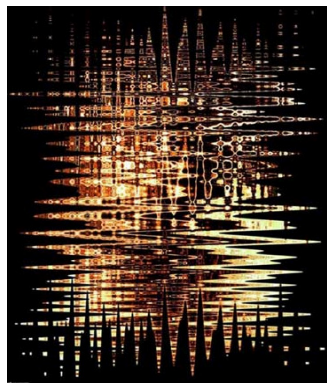
The peace be upon you
2012/80*80



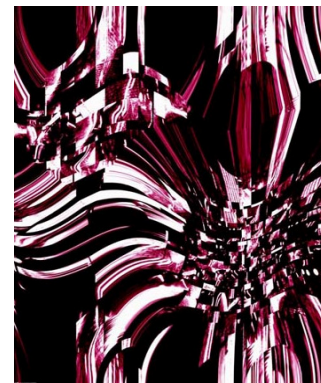
Seo-Yoon JUNG

정서윤

Formations	Sangmyung University (B.A. - Image Science/ Photography), Seoul, Korea	
Prix	2012	Awarded for The 33th Korea Modern Art, Seoul, Korea
	2011	Awarded for The 1th SDU Art, Seoul, Korea
	2010	Awarded for Hunt for This Century's Leonardo da Vinci-International Art Triennale, Osaka, Japan
	2004	Awarded for The 25th Korea Modern Art, Seoul, Korea
Expositions	2012	<i>Matin, Midi, Soir, Nuit et... Au pays du Matin Calme</i> , Galerie Etienne de Causans, Paris, France
	2011	<i>The 140th San Francisco Fine Art Fair</i> , San Francisco, U.S.A.
	2011	<i>Understanding and Prospects of Contemporary Art</i> , SONG's Gallery, Seoul, Korea
	2011	<i>The 4th Daegu Art Fair</i> , Daegu, Korea
	2011	<i>Seoul Contemporary New Generation Art Star Exhibition</i> , Seoul Arts Center, Korea
	2011	<i>Art Edition'11/International Art Fair</i> , Seoul, Korea
2011	<i>Vidangil Project</i> , Milano, Italy	



Abstraction from a photograph # 1
2010/142.24*111.76



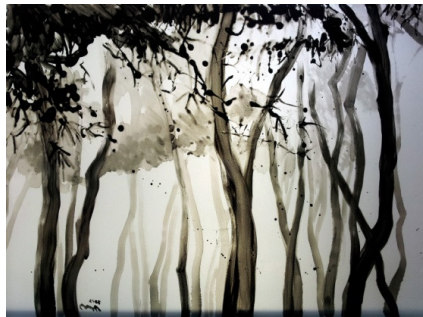
Abstraction from a photograph # 2
2010/142.24*111.76



Kyu-Sou YOU

유경수

Formations	Graduate School of Incheon Catholic University (M.A. - Christian Art Major in Stained Glass), Korea Gangnam University (B.A. - Art design), Korea	
Pratiques	2012 ~ 2011	Designer at Chartres (Total glass arts and crafts), Seoul, Korea Design team member at Graduate School of Incheon Catholic University (Construction of Stained Glass for Historic Seoul Station), Korea
	2010	Design team member & Teaching Assistant at Graduate School of Incheon Catholic University (Construction of Stained Glass Windows, Paneling & Murals for Yonsei University - International Campus Sport Complex Zone), Korea
	2009 – 2004	Design team member at Moosung Stained Glass (Design and Construction of Stained Glass Windows, Doors, Tables and other decorative elements for over 150 Cathedrals and Churches), Seoul, Korea
Expositions	2009	<i>Team event SIAF of 2009</i> , Takasaki City Gallery, Takasaki, Japan



Pine I
2012/70*50



Pine II
2012/70*50



Pine III
2012/70*50

ICONOCLASTES

G A L E R I E

20 rue Danielle Casanova
75002 Paris France

Tel : 33 (0)1 40 20 40 63
Email : iconoclastes@laposte.net

Commissaire d'exposition **Jeong-Min Lee**
Contact : 33 (0)6 31 82 23 20
docentalady@gmail.com